

# Bruce Highway Upgrade – Caboolture-Bribie Island Road to Steve Irwin Way (Exit 163)

## Final design released for highway upgrade

The Department of Transport and Main Roads (TMR) has released the design for the 11-kilometre stretch of Bruce Highway between Caboolture-Bribie Island Road and Steve Irwin Way (Exit 163).

The Bruce Highway Upgrade – Caboolture-Bribie Island Road to Steve Irwin Way (Exit 163) project is funded on an 80/20 (federal:state) basis with funding of \$662.5 million allocated by the Australian (\$530 million) and Queensland (\$132.5 million) governments.

This project is being delivered under the Bruce Highway Upgrade Program, a program delivering \$12.6 billion of works over a 15-year period.

### Key design features

- Two extra lanes (one in each direction) between Caboolture-Bribie Island Road interchange and Steve Irwin Way interchange (Exit 163).
- 110km/h posted speed north of D'Aguiar Highway and 100km/h posted speed to the south.
- 3.5 metre traffic lanes with 3.0 metre shoulders and flatter batters or barriers as required.
- New three-lane bridges to withstand a 1-in-100-year flood for northbound and southbound lanes at all five creek crossings.
- New four-lane northbound bridge at Lagoon Creek and the southbound bridge at Beerburum Creek to allow for current and future ramps.
- Caboolture-Bribie Island Road interchange modification to reduce southbound weaving and allow for ramp metering.
- Northbound exit ramp separation for Caboolture-Bribie Island Road and D'Aguiar Highway interchange into two consecutive exit ramps.
- Minor changes to existing interchanges at Pumicestone Road and Steve Irwin Way (Exit 163).
- Provision for Smart Motorways.

### Project benefits

<b>Safety</b>	Wider shoulders will allow for vehicles to safely pull over in case of a crash or emergency while allowing traffic to continue to flow
<b>Capacity</b>	Increased lanes from four to six will deliver greater capacity for commuter and freight traffic
<b>Flood immunity</b>	Significantly improved flood immunity with the upgraded highway designed to withstand a 1-in-100-year flood
<b>Jobs</b>	Average of 664 direct jobs for the lifetime of the project



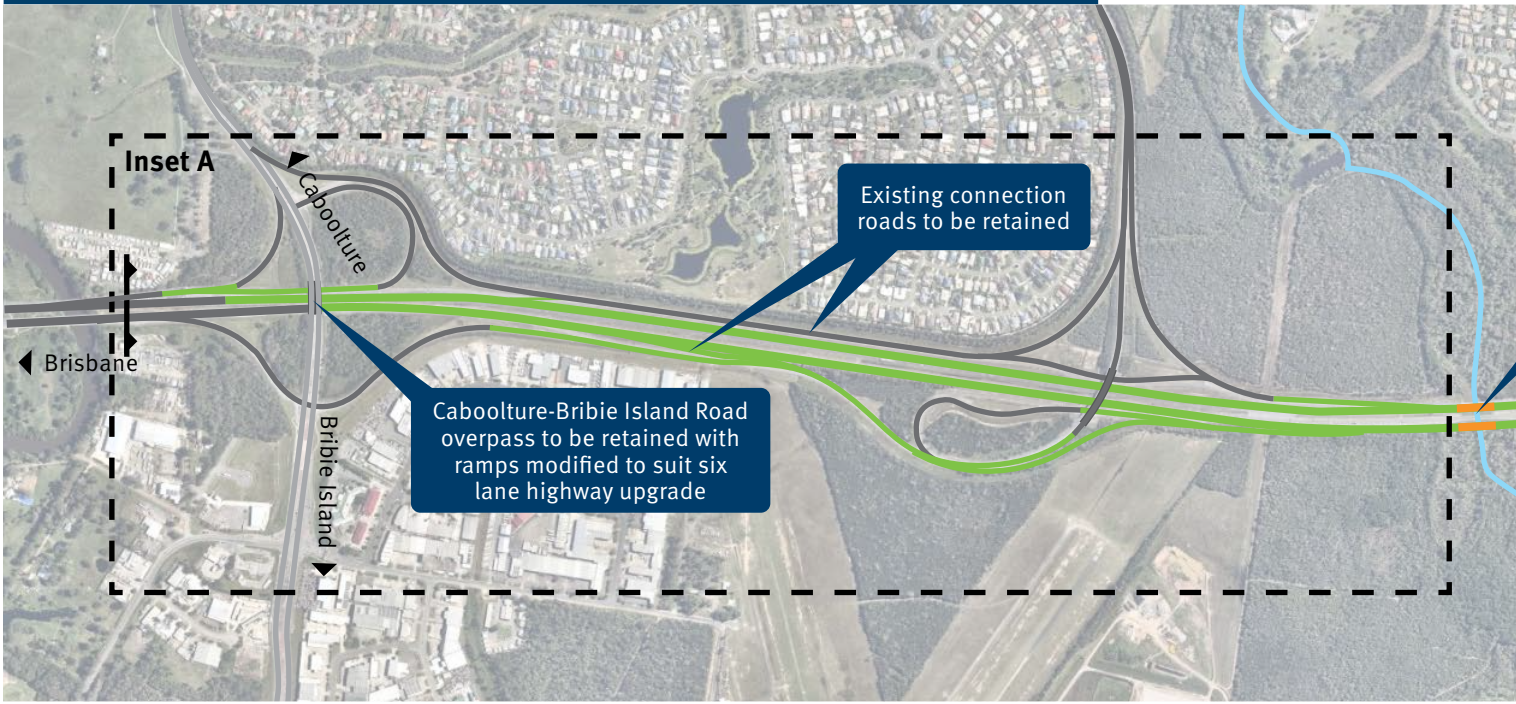
Australian Government



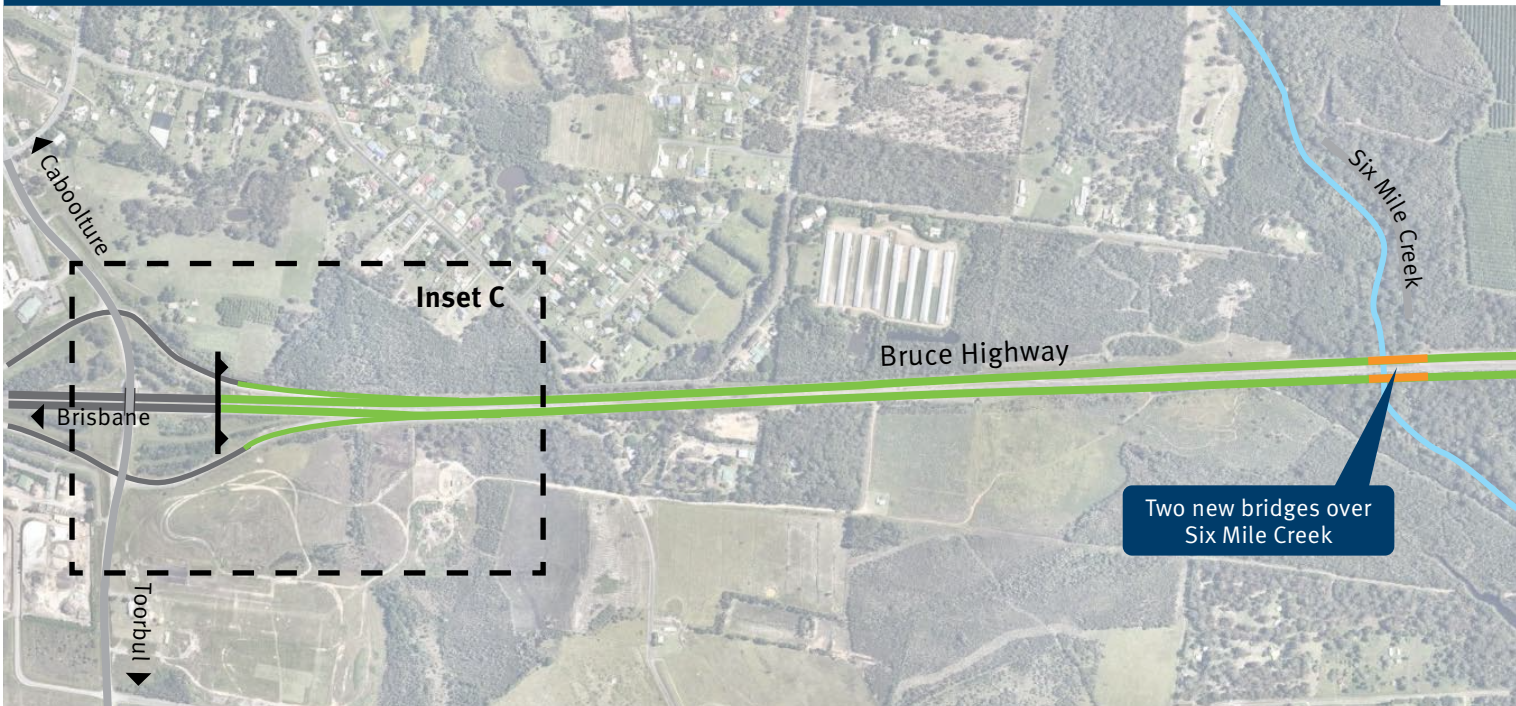
Queensland Government

**BUILDING OUR FUTURE**

## Contract 1 – Caboolture-Bribie Island Road to Pumicestone Road

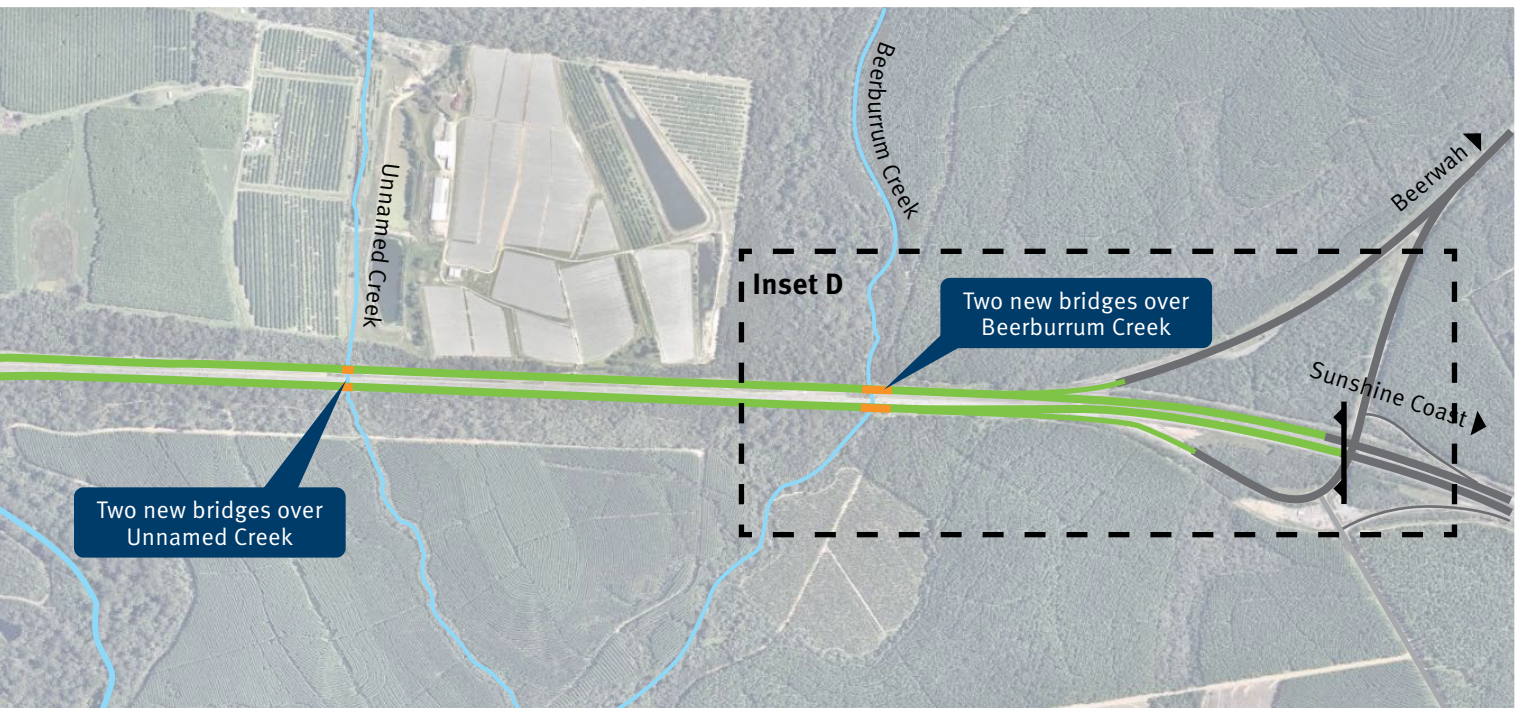
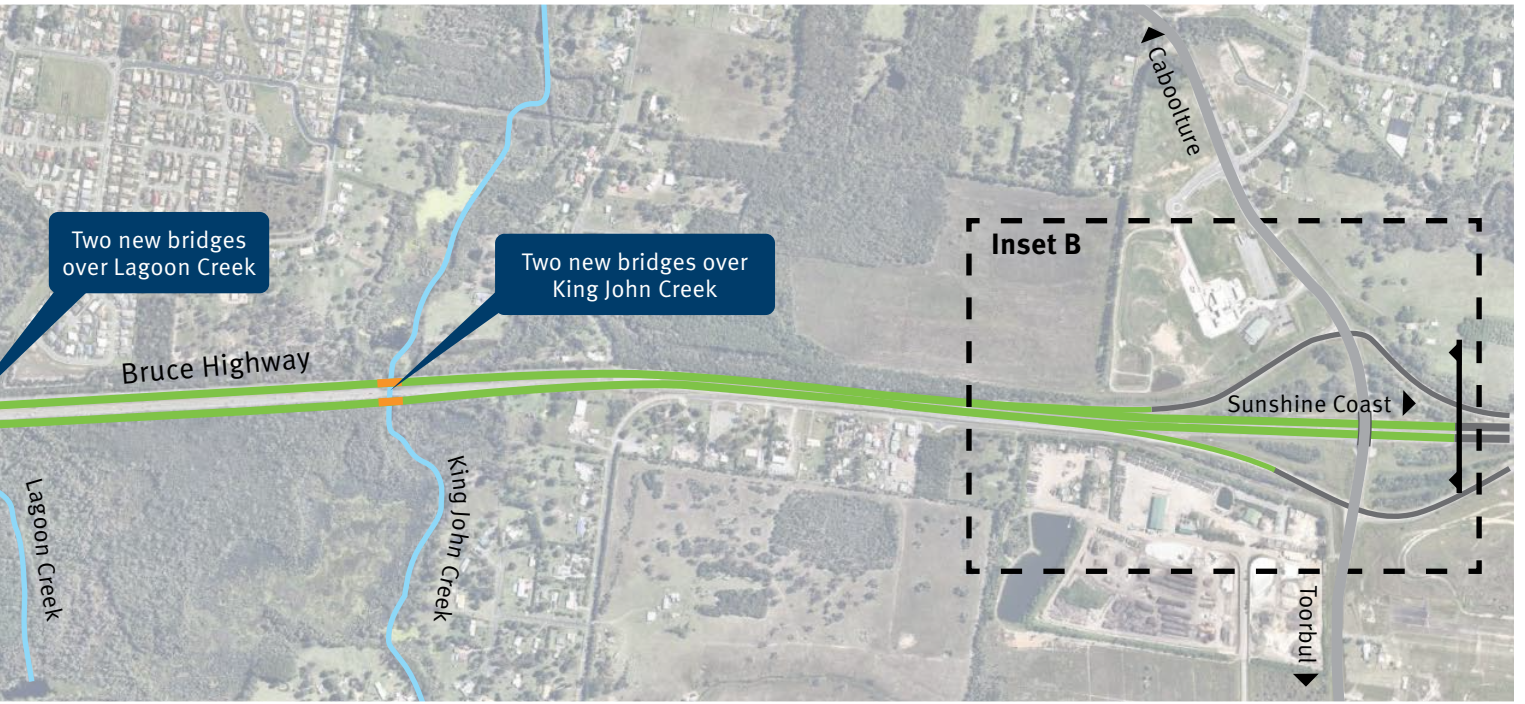


## Contract 2 – Pumicestone Road interchange to Steve Irwin Way (Exit 163) interchange

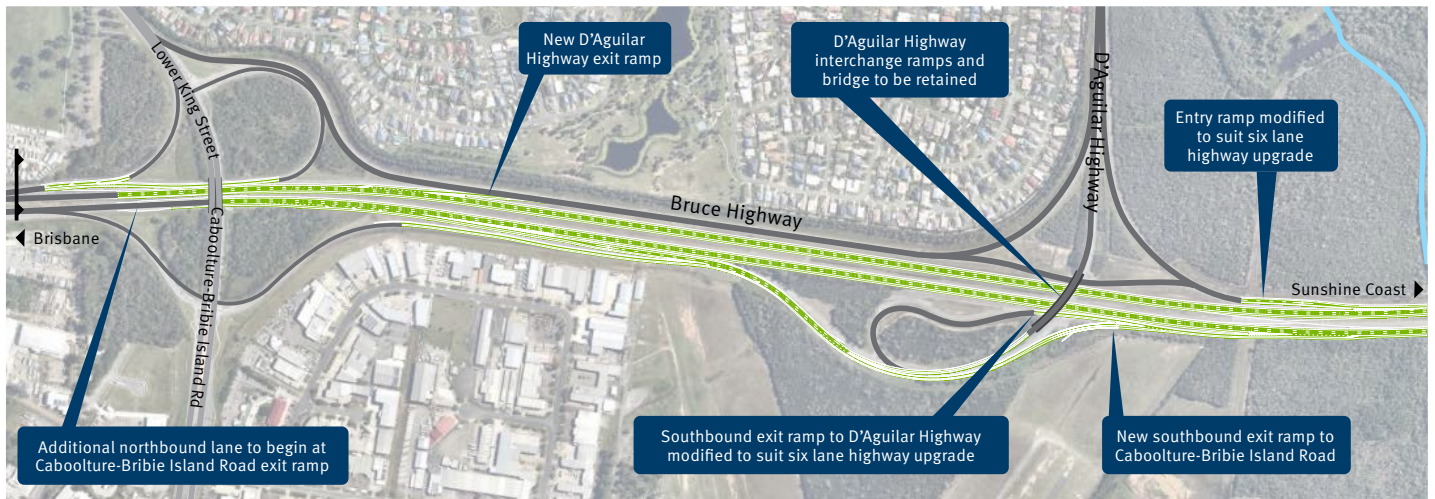


### Legend

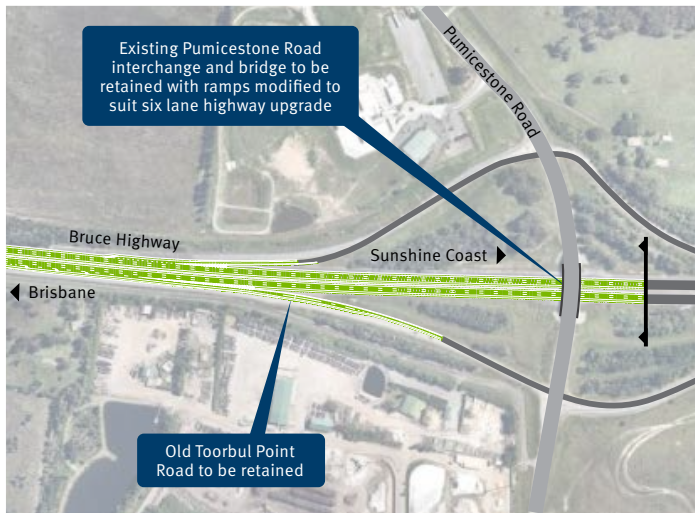
- New Bruce Highway and ramps
- Existing Bruce Highway and ramps (not upgraded)
- New Bridges
- Other roads
- Waterways



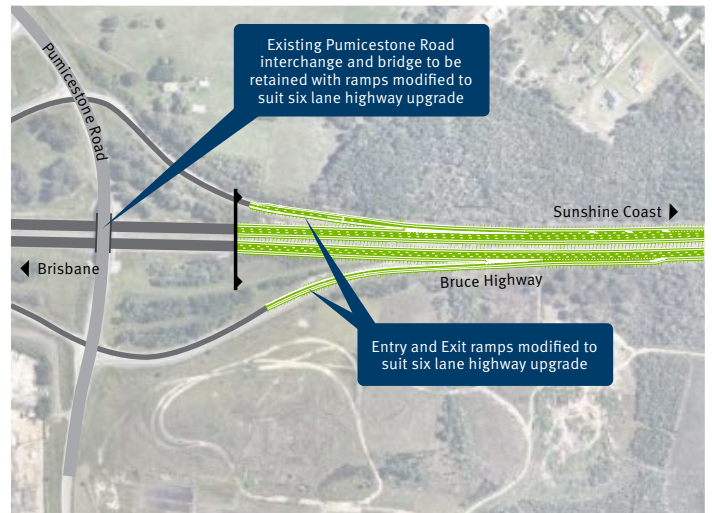
**Inset A**  
**Caboolture-Bribie Island Road and D'Aguilar Highway**



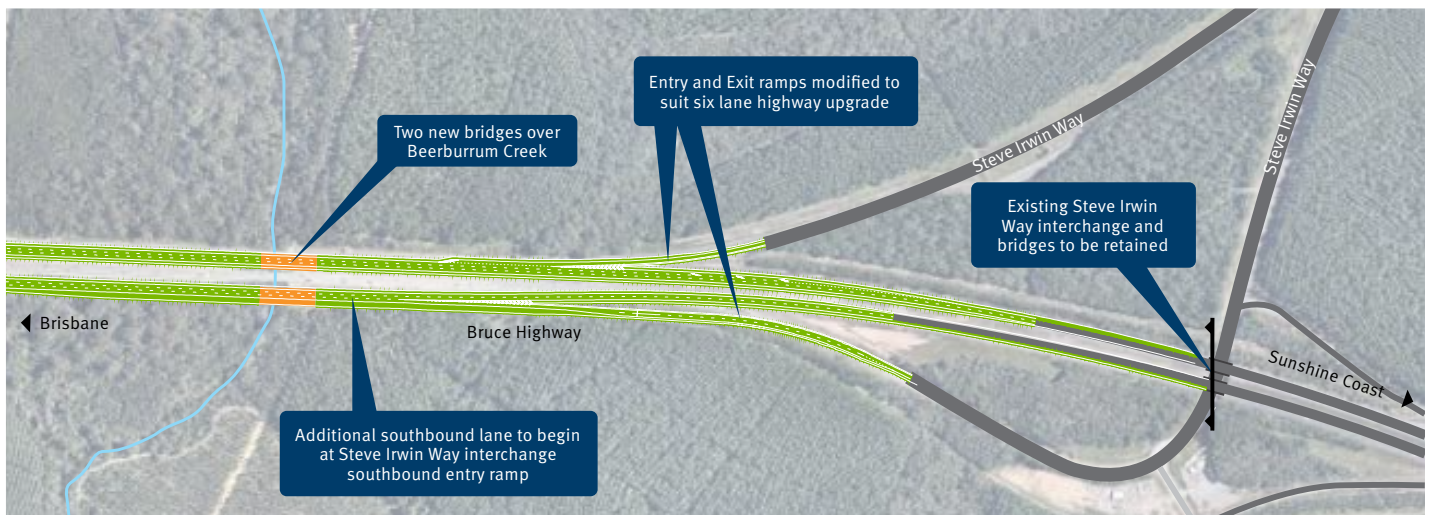
**Inset B**  
**Pumicestone Road interchange**



**Inset C**  
**Pumicestone Road interchange**



**Inset D**  
**Steve Irwin Way (Exit 163) interchange**





## What are Smart Motorways?

Smart Motorways technologies including ramp signals, variable speed limit and message signs, vehicle detection systems and CCTV cameras will be delivered as part of this project. These technologies help to improve safety, reduce stop-start travel, and provide more predictable travel times for motorists.

As part of the Bruce Highway Smart Motorways Stage 2 project, Smart Motorways technologies will be delivered along the 60-kilometre link of the Bruce Highway between Pine River and Caloundra Road.

## Project milestones

- April 2019**  Commence Detailed Design
- February 2020**  Commence Procurement for Major Contracts
- April 2020**  Commence Early Works
- May 2020**  Finalise Detailed Design
- Late 2020**  Start Construction Contract 1
- Mid-2021**  Start Construction Contract 2

## Project delivery

TMR plans to deliver the major construction works as two separate packages. The first package, Contract 1, between Caboolture-Bribie Island Road and Pumicestone Road is scheduled to start in late 2020. The second package, Contract 2, between Pumicestone Road and Steve Irwin Way (Exit 163) is scheduled to start in mid-2021.

## Quick facts

### Road traffic noise

We understand that road traffic noise is of interest for many people who live next to or near the highway. The project team has carried out noise monitoring at various locations within the project area to develop a noise model, which predicts future noise levels.

Our [Transport Noise Management Code of Practice](#) sets out standard processes for dealing with the effects of road traffic noise on properties adjacent to state-controlled roads. If predicted noise levels at adjacent properties exceed the criterion in the code of practice, the department will discuss requirements under the code of practice with property owners.

## Environmental management

Environmental management and conservation is one of TMR's highest priorities. The department has been liaising with key stakeholders and the Australian and Queensland governments to discuss environmental issues, share information and ensure legislative requirements are met and, where possible, exceeded.

Through this consultation, many aspects of environmental management have been considered in the design layout and will be included in construction methods for the project. We will continue to listen to and work with local environmental stakeholders to ensure best practice is achieved as part of all environmental initiatives.

## Traffic management

Minimising disruption to the flow of traffic while widening the Bruce Highway to six lanes will be one of the key challenges for the project. During construction, TMR will work with the contractors on strategies to keep the highway fully operational. It is important to note that reduced speed limits will be in place during construction.

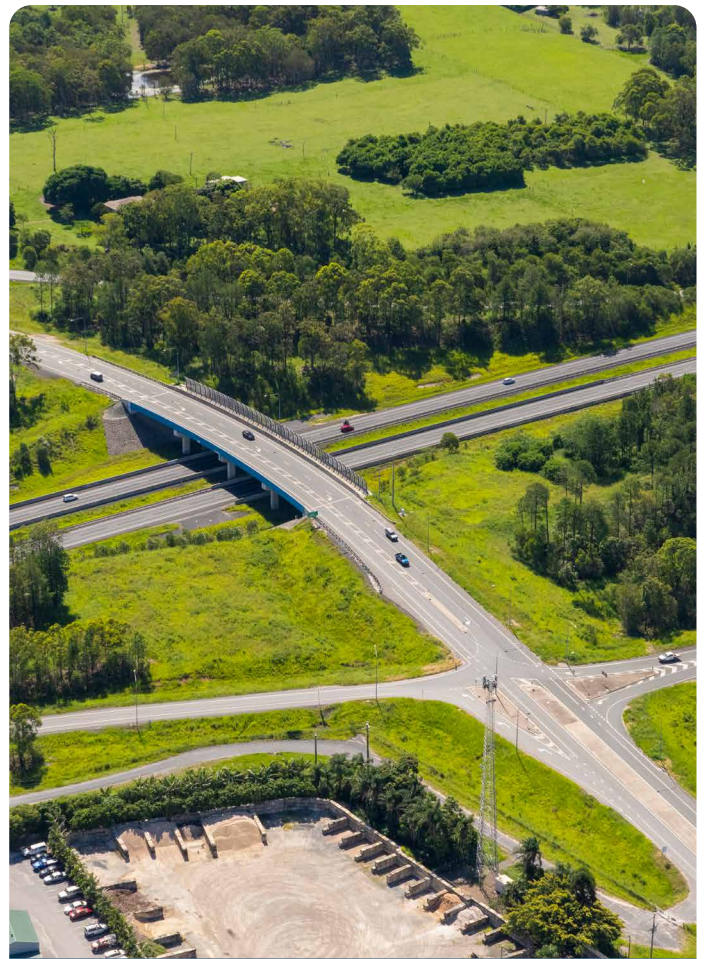
For real time information on road closures, traffic conditions and traffic times on the Bruce Highway, call 13 19 40, visit [www.QLDTraffic.qld.gov.au](http://www.QLDTraffic.qld.gov.au) or check the *QLDTraffic* App (download for free from the App Store or Google Play).

## Sustainability

Our community, reducing waste and thinking long term are key sustainability focus areas for the department during design and construction.

The Queensland Government's objective is to embed sustainability into infrastructure planning, design, construction and operation to deliver environmental, social and economic benefits to the community.

To achieve sustainability outcomes the project will incorporate innovation where possible and strive for an Infrastructure Sustainability Council of Australia 'excellent' rating in the use of construction materials and methods, pollution control, environmental management and delivery of community benefits.



## Want more information?

Your ideas and feedback are important to us.

**Call** Talk to our community engagement team by calling **1800 430 800\***

**Email** Send an email to [brucehwyc2siw@tmr.qld.gov.au](mailto:brucehwyc2siw@tmr.qld.gov.au)

**Web** Find out more online and register for project updates at [www.tmr.qld.gov.au/C2SIW](http://www.tmr.qld.gov.au/C2SIW)

\* Free call from anywhere in Australia, call charges apply for mobile phones and payphones. Check with your service provider for call costs.