

Recommended Corridor

Map 1

Issue date 30 August 2007



- Recommended Corridor
- 275kV Overhead Power Lines
- Rivers / Creeks
- Railway
- Bruce Highway
- Traveston Crossing Dam Stage 1 FSL (RL 71m)
- Traveston Crossing Dam Stage 2 FSL (RL 79.5m)
- Traveston Crossing Dam Land Purchase Boundaries
- Cadastral
- Road Reserve



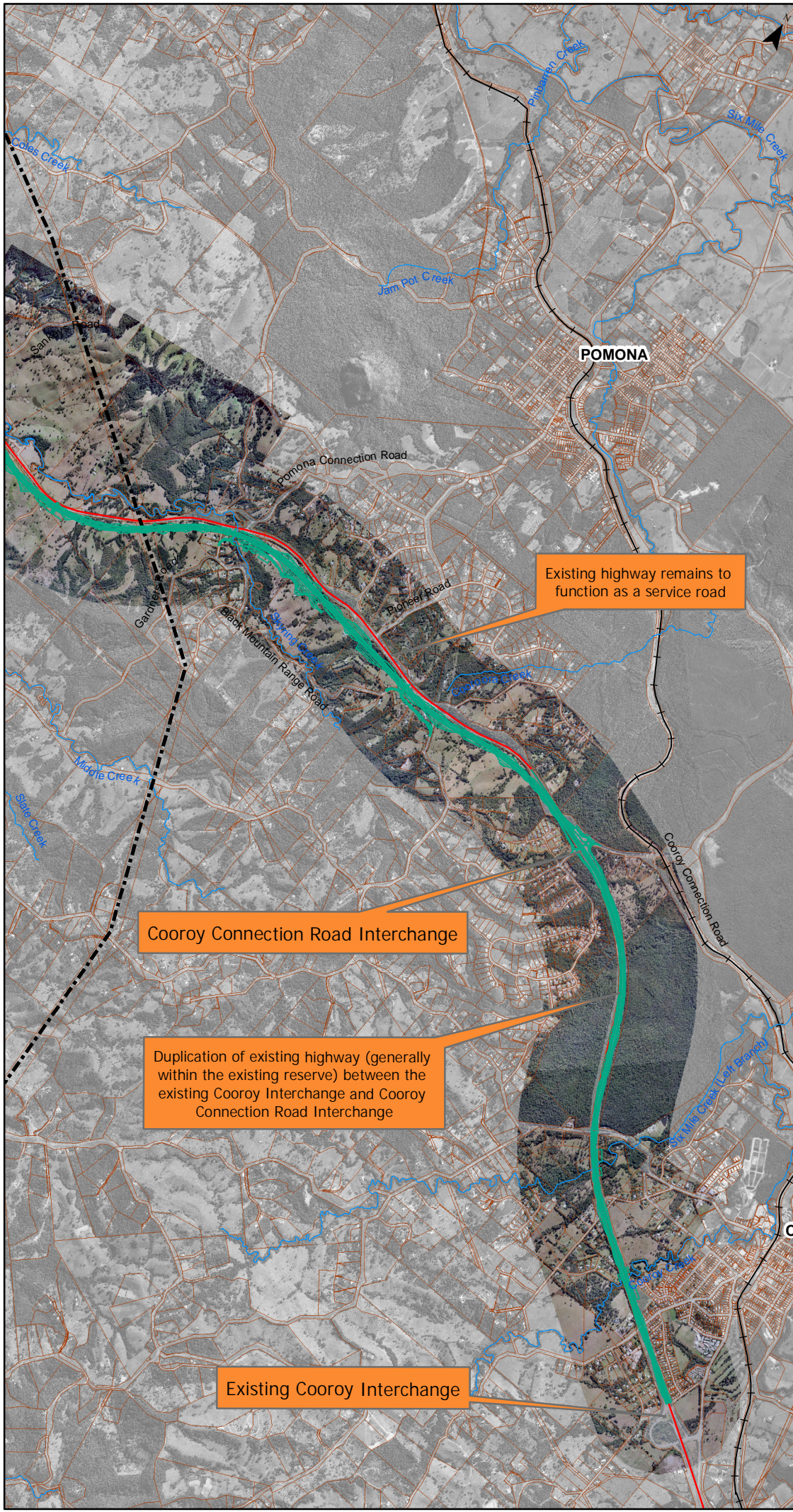
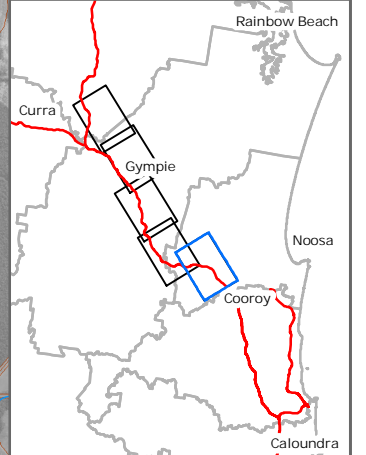
The Recommended Corridor and possible future land requirements shown on this plan are subject to change and final refinements during detailed planning and design.

Base information supplied by Noosa, Cooloola, Tiaro and Kilkivan Shire councils, and Department of Natural Resources and Mines.

Cadastral information current as at 3 February 2007  
Colour Aerial Photography supplied July 2006  
Black and White Photography supplied April 2006

While every care is taken to ensure the accuracy of this data, the Department of Main Roads makes no representations or warranties about its accuracy, reliability, completeness or suitability for any particular purpose and disclaims all responsibility and liability (including without limitation, liability in negligence) for all expenses, losses, damages (including indirect or consequential damage) and costs which you might incur as a result of the plan being inaccurate or incomplete in any way for any reason.

Bruce Highway (Cooroy to Curra)  
Strategic Planning Study  
Recommended Corridor Report



Existing highway remains to function as a service road

Cooroy Connection Road Interchange

Duplication of existing highway (generally within the existing reserve) between the existing Cooroy Interchange and Cooroy Connection Road Interchange

Existing Cooroy Interchange