

Based on or contains data provided by the State of Queensland (Department of Natural Resources and Water) [2007]. In consideration of the State permitting use of this data you acknowledge and agree that the State gives no warranty in relation to the data (including accuracy, reliability, completeness, currency or suitability) and accepts no liability (including without limitation, liability in negligence) for any loss, damage or costs (including consequential damage) relating to any use of the data. Data must not be used for direct marketing or be used in breach of the privacy laws.

**LEGEND**

- |                |  |   |
|----------------|--|---|
| Port Bundaberg | Not at risk from potential acid-sulphate soils                 | Possibly at risk from potential acid - sulphate soils at depths < 1.5m.         |
| Road           | At risk from potential acid sulphate soils at depths < 1.5m.   | Marine Wetlands - At risk from potential acid sulphate soils at depths < 1.5 m. |
|                | At risk from potential acid - sulphate soils at depths > 1.5m. |   |

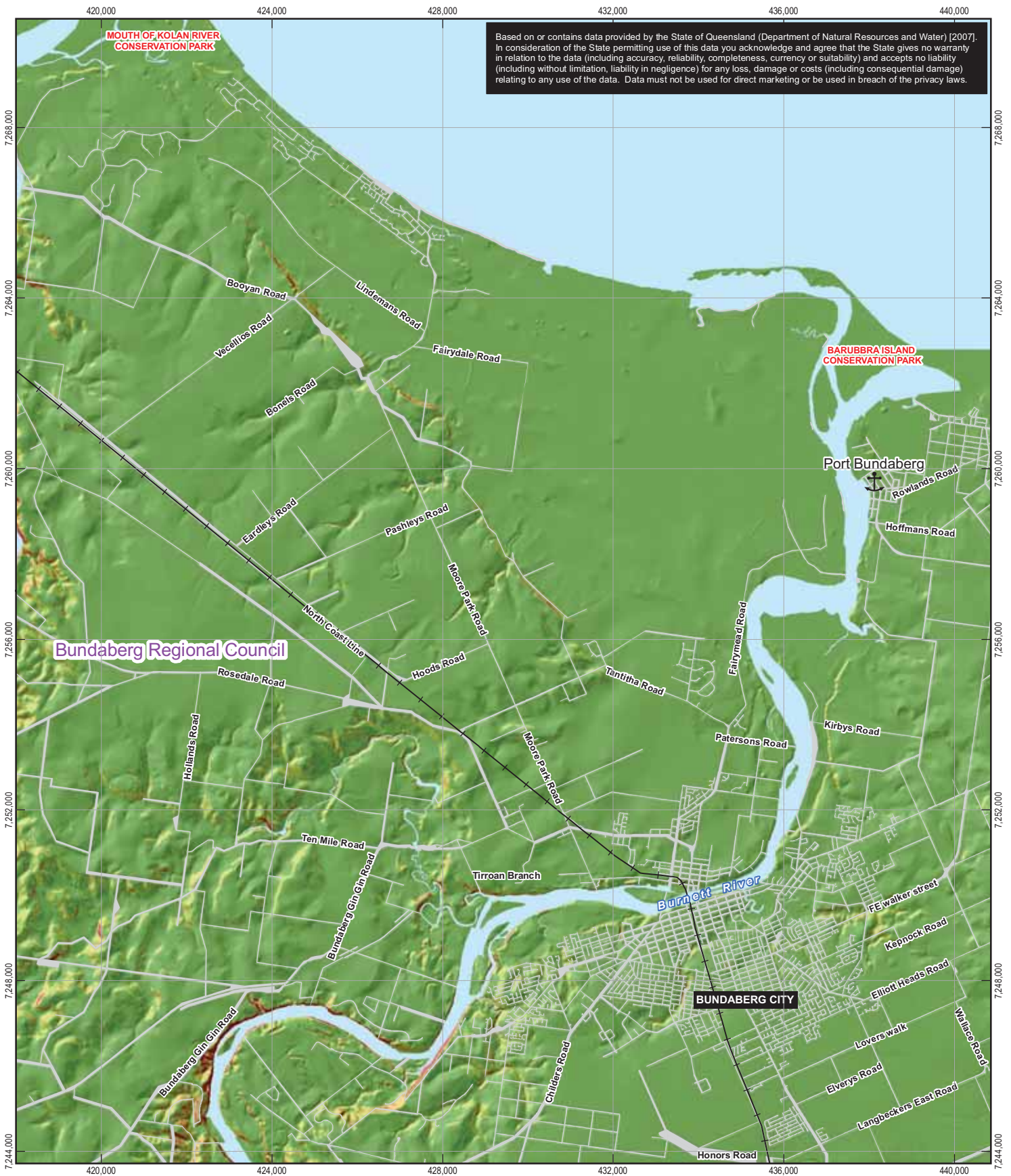
1:120,000 (at A4)  
 0 1,000 2,000 3,000 4,000  
 Metres  
 Map Projection: Transverse Mercator  
 Horizontal Datum: Geocentric Datum of Australia  
 Grid: Map Grid of Australia 1994, Zone 56



Queensland Transport  
 Rail Link Options Study

Job Number | 41-19291  
 Revision | B  
 Date | 06 Oct 2008

**Potential Acid Sulphate Soils**



**LEGEND**

- Port Bundaberg
- North Coast Railway Line
- Road

**Slope - GHD 2007**  
(Created from NRW Contours)

- 0 - 5%
- 5 - 10%
- 10 - 15%
- 15 - 100%

1:120,000 (at A4)

0 1,000 2,000 3,000 4,000

Metres

Map Projection: Transverse Mercator  
Horizontal Datum: Geocentric Datum of Australia  
Grid: Map Grid of Australia 1994, Zone 56

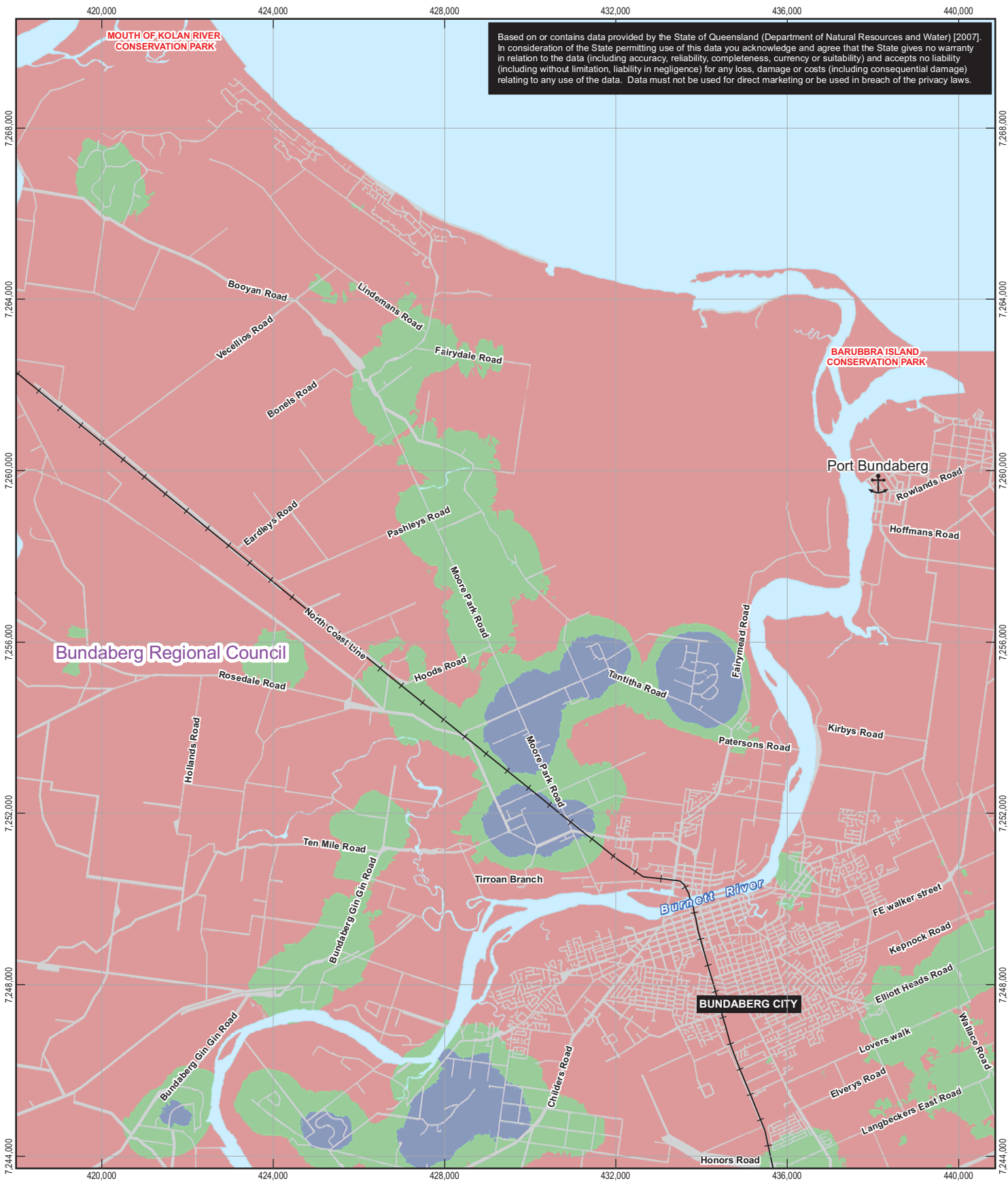


Queensland Transport  
Rail Link Options Study

Job Number | 41-19291  
Revision | B  
Date | 08 Oct 2008






**Percentage Slope**





Based on or contains data provided by the State of Queensland (Department of Natural Resources and Water) [2007]. In consideration of the State permitting use of this data you acknowledge and agree that the State gives no warranty in relation to the data (including accuracy, reliability, completeness, currency or suitability) and accepts no liability (including without limitation, liability in negligence) for any loss, damage or costs (including consequential damage) relating to any use of the data. Data must not be used for direct marketing or be used in breach of the privacy laws.

**LEGEND**

-  Port Bundaberg
-  North Coast Railway Line
-  Road
- Groundwater Bore Density**
-  <10 Bores/Km2
-  10-35 Bores/Km2
-  > 35 Bores/Km2

1:120,000 (at A4)

0 1,000 2,000 3,000 4,000

Metres

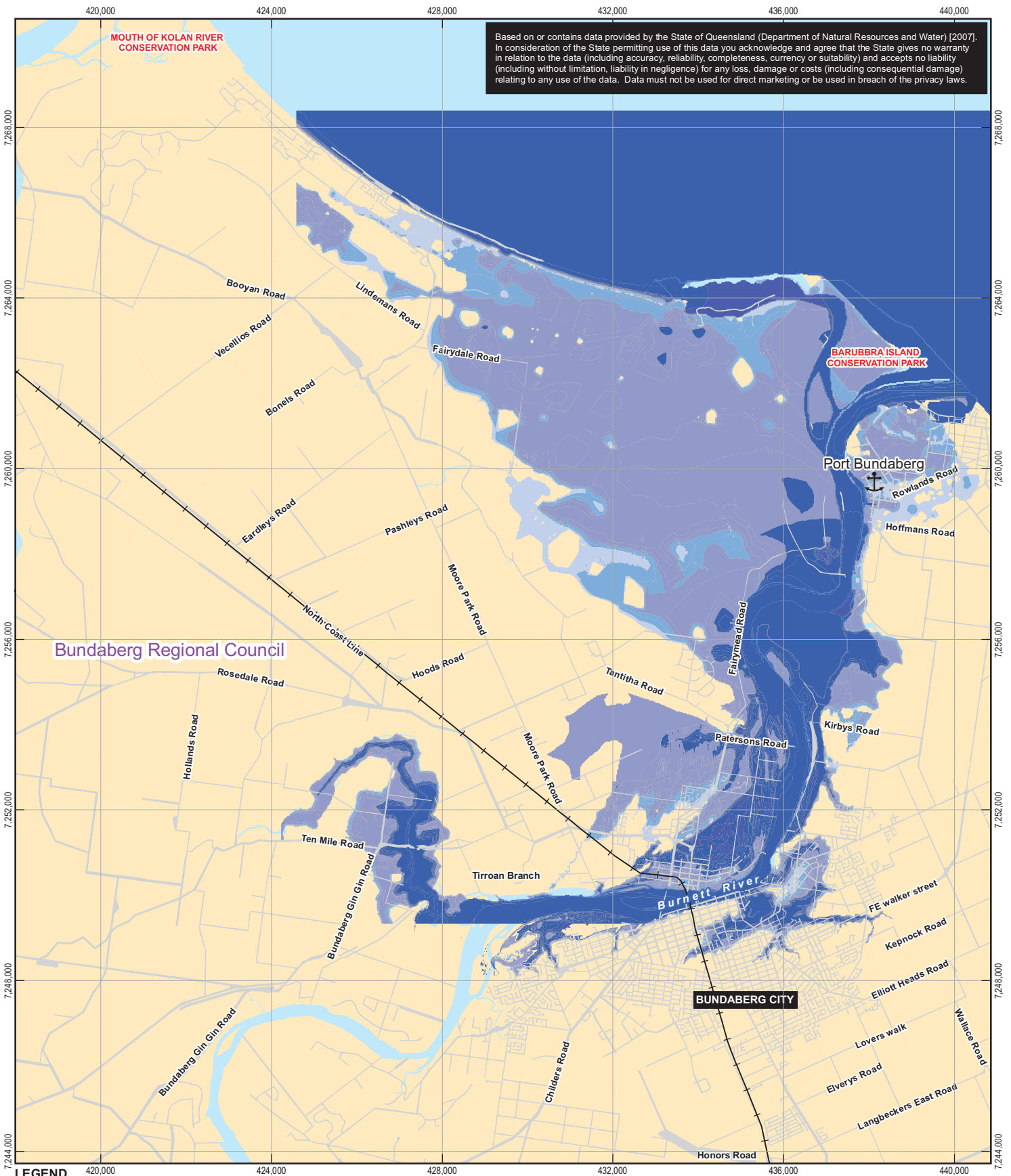
Map Projection: Transverse Mercator  
Horizontal Datum: Geocentric Datum of Australia  
Grid: Map Grid of Australia 1994, Zone 56



Queensland Transport  
Rail Link Options Study

Job Number | 41-19291  
Revision | B  
Date | 06 Oct 2008

**Groundwater Bores**



Based on or contains data provided by the State of Queensland (Department of Natural Resources and Water) [2007]. In consideration of the State permitting use of this data you acknowledge and agree that the State gives no warranty in relation to the data (including accuracy, reliability, completeness, currency or suitability) and accepts no liability (including without limitation, liability in negligence) for any loss, damage or costs (including consequential damage) relating to any use of the data. Data must not be used for direct marketing or be used in breach of the privacy laws.

**LEGEND**

- Port Bundaberg
- North Coast Railway Line
- Road

**Flood 100 year depth**  
(Digitized by GHD from Bundaberg City Council Website)

	< 0.5m
	>= 0.5 < 1m
	>= 1m < 3m
	>= 3m

1:120,000 (at A4)

0 1,000 2,000 3,000 4,000

Metres

Map Projection: Transverse Mercator  
Horizontal Datum: Geocentric Datum of Australia  
Grid: Map Grid of Australia 1994, Zone 56



Queensland Transport  
Rail Link Options Study

Job Number | 41-19291  
Revision | B  
Date | 06 Oct 2008

**Flood Inundation Levels**