









# Gold Coast Light Rail Stage 4 (Burleigh Heads to Coolangatta)

Burleigh Heads to Tugun section  
Concept design





**LEGEND**

-  **Light Rail Stage 3**
-  **Light Rail Stage 4**  
Proposed light rail station locations\*
-  **Light Rail Stage 4**  
Completed Corridor Study (Burleigh Heads to Tugun)
-  **Light Rail Stage 4**  
Current Corridor Study (Tugun to Coolangatta)
-  **Key roads**
-  **Key M1 upgrade features**  
Upgraded overpass at Nineteenth Avenue, new M1 service road between Tallebudgera and KP McGrath Drive, and new off-ramp to Sarawak Avenue
-  **Future heavy rail**
-  **QLD–NSW Border**

\*Note: Station names are not final and are working titles only

Completed Corridor Study

Current Corridor Study

Possible Tweed Heads extension

**Stage 4 of the Gold Coast Light Rail is a 13 kilometre extension south of the Light Rail Stage 3, linking Burleigh Heads to Coolangatta via the Gold Coast Airport. The Gold Coast Light Rail system is being designed to be delivered in stages to respond to population growth.**

The project will connect communities with businesses, jobs, hospitals and medical facilities, education, shopping, dining, entertainment and sporting centres.

Through this critical infrastructure we will support the Gold Coast and its continued growth for decades to come.

### **Key Features**

- Dual track along the existing corridor alignment
- Improved Palm Beach Avenue precinct
- Improved connectivity to the M1
- Active transport opportunities
- Opportunity to develop a beachfront Oceanway

The Queensland Government and City of Gold Coast have committed \$5 million (joint funding) to undertake a preliminary business case for planning of Stage 4 of the light rail.



Concept only – subject to change

Burleigh Head National Park

Proposed Light Rail Station at Twenty Eighth Avenue

Potential Traction Power Station location

New Active transport bridge

New Light Rail bridge

Jelluralg Aboriginal Cultural Centre

Tallebudgera Drive

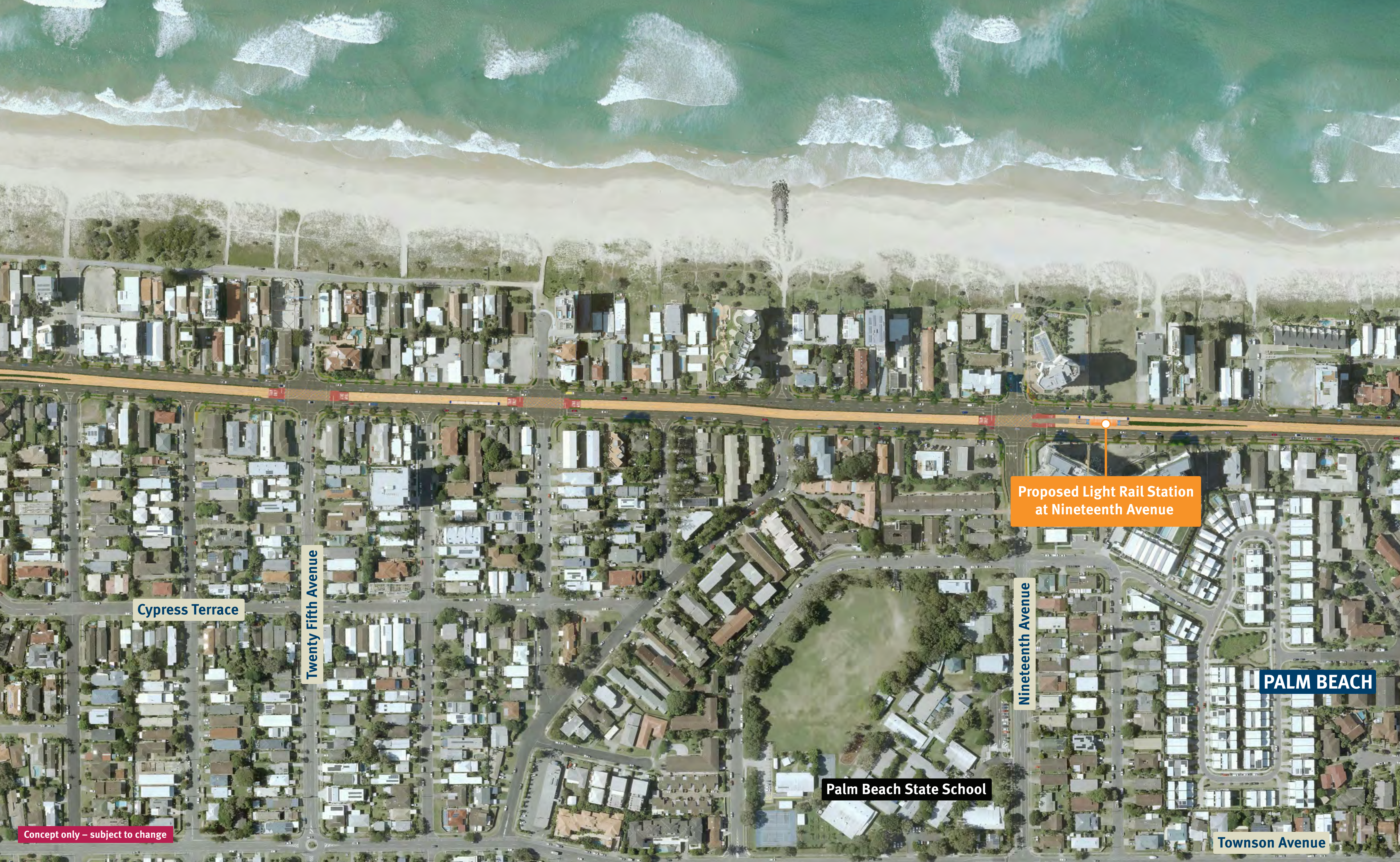
Twenty Seventh Avenue

Proposed Light Rail Station at Burleigh Head National Park

PALM BEACH

Tallebudgera Creek





Proposed Light Rail Station  
at Nineteenth Avenue

Cypress Terrace

Twenty Fifth Avenue

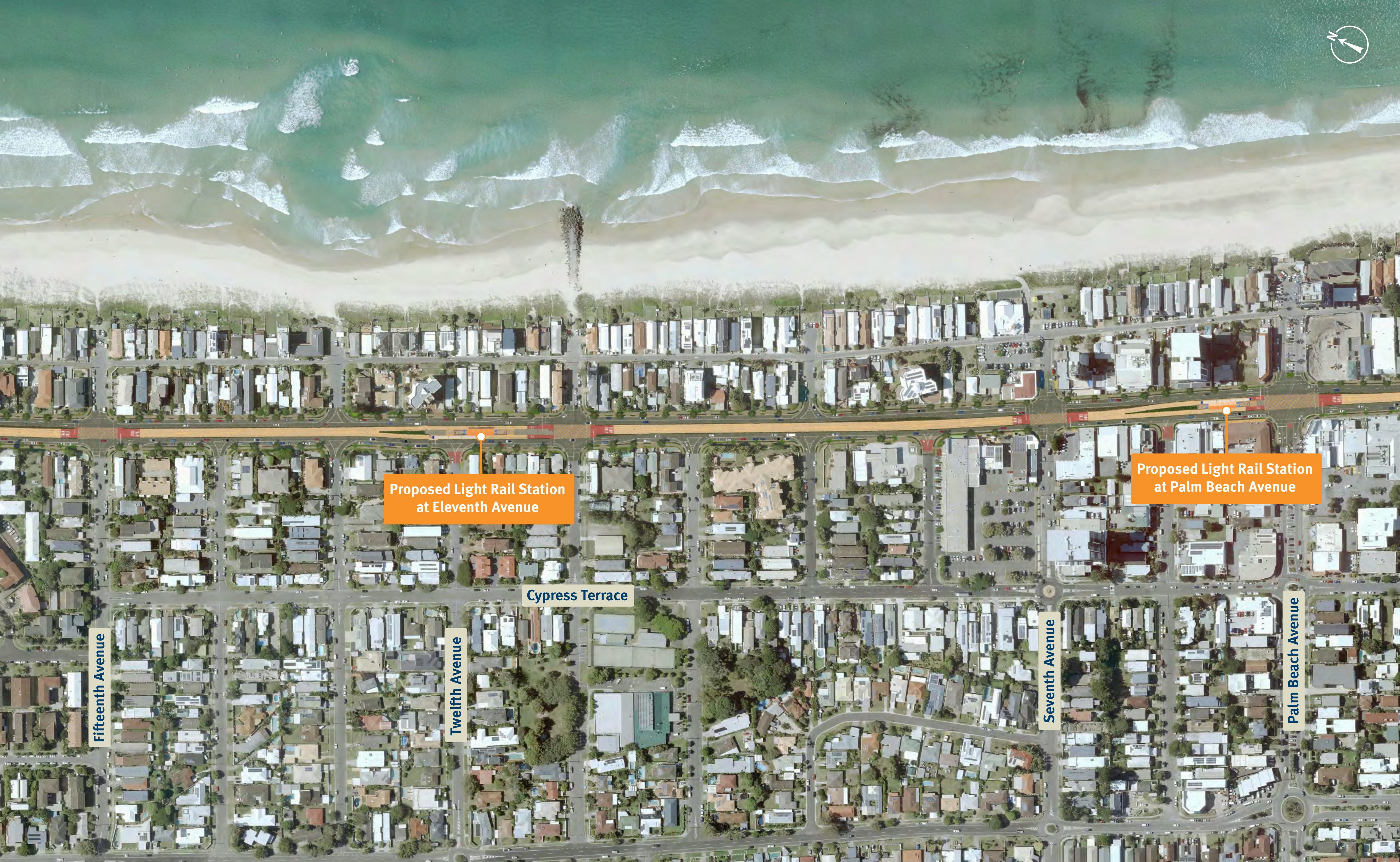
Nineteenth Avenue

PALM BEACH

Palm Beach State School

Townson Avenue

Concept only – subject to change



Proposed Light Rail Station  
at Eleventh Avenue

Proposed Light Rail Station  
at Palm Beach Avenue

Fifteenth Avenue

Twelfth Avenue

Cypress Terrace

Seventh Avenue

Palm Beach Avenue



Palm Beach Parklands

Tarrabora Reserve

Potential Traction Power Station location

Proposed Light Rail Station at Thrower Drive

Fourth Avenue

First Avenue

Thrower Drive

Palm Beach Currumbin State High School

Concept only – subject to change





**Currumbin Wildlife Sanctuary**

**Tomewin Street**

**Access to and from Gold Coast Highway closed**

**Reconfigured intersection**

**New active transport bridge (subject of separate planning project)**

**Currumbin Hill Conservation Park**

**Proposed Light Rail Station at Tomewin Street**

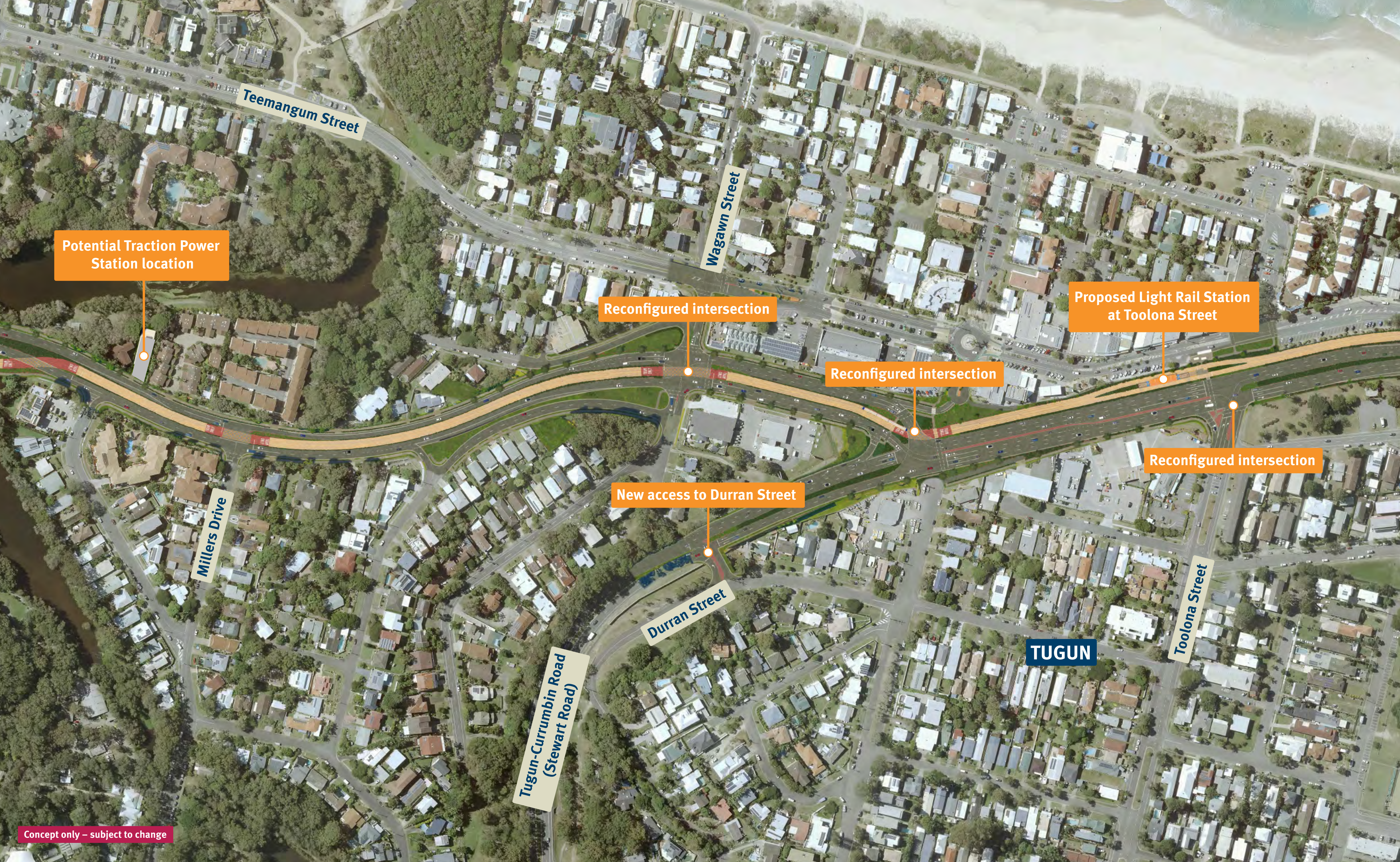
**New Light Rail bridge**

**Beree-badalla Reserve**

**CURRUMBIN**

**Currumbin Creek**

**Duringan Street**



Potential Traction Power Station location

Reconfigured intersection

Proposed Light Rail Station at Toolona Street

Reconfigured intersection

Reconfigured intersection

New access to Durran Street

Teemangum Street

Wagawn Street

Millers Drive

Durran Street

Tugun-Currumbin Road (Stewart Road)

TUGUN

Toolona Street

Concept only - subject to change



**Golden Four Drive**

**Proposed Light Rail Station  
at Boyd Street**

**Reconfigured intersection**

**Potential Traction Power  
Station location**

**Gold Coast Highway  
(Tugun to Coolangatta)  
Multi-modal Corridor  
Study currently underway**

**New intersection access to  
Gold Coast Highway**

**Kitchener Street**

**Boyd Street**

**Gold Coast Airport**

**Tugun Skatepark**

## For more information:

**Freecall:** 1800 316 365\*

**Email:** [gclr4@tmr.qld.gov.au](mailto:gclr4@tmr.qld.gov.au)

**Web:** [www.tmr.qld.gov.au/gclr4](http://www.tmr.qld.gov.au/gclr4)

**Post:** Transport and Main Roads  
PO Box 442, Nerang Qld 4211

*\*Check with your service provider for call costs*

**13 QGOV (13 74 68)**

[www.tmr.qld.gov.au](http://www.tmr.qld.gov.au)